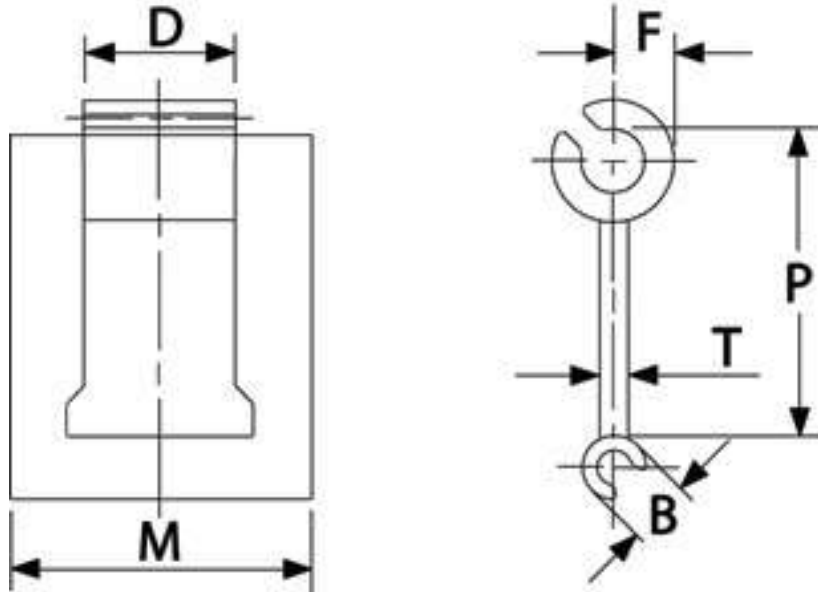


Pressed Steel Detachable Chain

Transvision Steel Detachable Link Chains (or Pressed Steel Chains) manufactured to ASME B29.6 for agricultural, transport and similar machineries



Chain No.	P	F	D	B	M	T	U.T.S. (kN)
25	22.91	4.83	11.12	4.57	17.56	1.6	3.38
32	29.31	6.1	15.49	5.84	23.61	2.03	5.87
42	34.93	7.49	20.32	6.73	30.95	2.41	7.47
51	29.34	6.1	18.29	6.89	27.79	2.29	7.47
52	38.25	8.13	21.84	7.7	35.71	2.79	9.61
55	41.42	8.51	20.65	8.13	32.54	2.92	9.96
62	40.01	9.02	25.45	8.51	39.09	3.51	15.66
67H	58.65	12.7	28.19	11.38	47.62	4.44	19.57
67XH	58.65	10.16	28.19	11.38	47.62	4.83	24.46
72	66.27	11.3	28.19	10.39	49.21	4.06	17.79

